

Flash-Lamp Lasers

Flash-Lamp lasers use a Krypton arc lamp to "pump" or energize the YAG crystal. Lamp pumped lasers are available in a wide variety of power outputs and make the best general marker or coder.

Specifications

MARKING FEATURES

Marking speed: • Programmable, 0- 30.000 mm/s

- Up to 1300 characters/s

Line speed: 0-15 m/s

Marking field: Dependent on focusing optics: 25 x 25/70 x 70/115 x 115/170 x 170/240 x 240/560 x 560 mm², options

Marking formats: • Standard industrial fonts(Type 1, Windows and True Type Fonts)

- Individual and dot-matrix fonts
- Machine readable codes (OCR, 2D-matrix, bar codes, etc.)
- Linear, circular, angular reverse marking
- Rotation, mirroring, expansion, compression of texts, logos etc.
- Sequential and batch numbering
- Automatic date, time, shift coding, real-time clock function
- On-line marking of individual data, esp. fast multi-bin capability

SOFTWARE

Smart Graph: • Graphical user interface under Windows 2000/XP

- Full feature text/data/graphics/parameter editor for generation of texts, codes, individual fonts, logos, symbols, graphics
- Easy access to standard CAD and graphics programs by convenient import functions (dwg/dxf/ai/jpg/tif/pcx/bmp etc.)
- On-the-fly marking
- WYSIWYG

Command languages: • Selectable, installed: English, German

- Further languages optional

User hierarchy: User-dependent interface, password protection to prevent unauthorized access/operation

Storage: • RAM up to 256 MB

- Multi media card up to 256 MB

LASER AND MARKING HEAD

- Laser Type:
- Lamp-pumped Nd:YAG laser
 - Laser wavelength 1,064 nm
 - Power class 100 W
 - Pulse frequency programmable: cw, 100-65,000 Hz

Beam Deflection: Digital high speed galvanometer scanners

Focusing: Precision laser scan lens: focal length 56/100/163/254/420/810 mm and options

CONTROLLER

- Concept:
- Real-time operating system
 - Digital signal processors
 - Internet CAN bus
 - Ethernet communication between PC and marking system

- Communication:
- RS232 interfaces
 - Ethernet for PC networks
 - Optional CAN, Profibus
 - Bar code reader input
 - Shaft encoder input
 - More than 100 Input/Output ports for digital direct-selection of jobs, product detectors, machine/user interlocks, alarm signals, Start/Stop signal, etc.
 - Customer specific solutions

UTILITIES

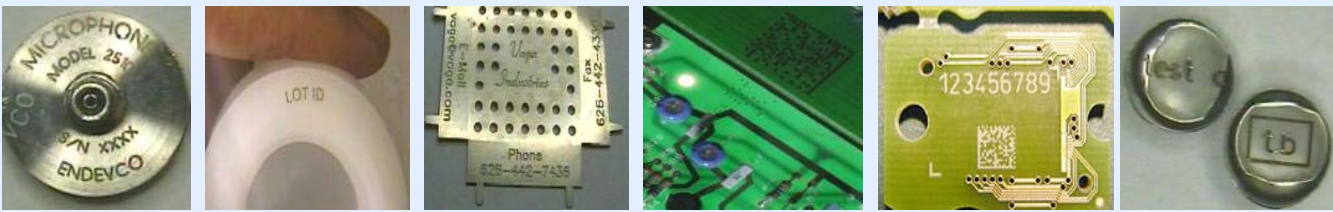
- Power Control Module PCM:
- Controller, supply, cooling unit
 - Dimensions ca. W525 x D631 x H732 mm3 (without wheels)

Cooling: Internal water/ water heat exchanger, optional external water/ air heat exchanger

Electrical: 230 V/ 400 (± 10 %), 50/60 Hz, 3 P/N/PE, <7.0 kW incl.cooling

- Environment:
- Temperature 5-40 °C (40 - 105 °F)
 - Humidity 10 - 90 %, not condensing

Sealing: Better IP54



Email : sales@amtecinc.com

APPLIED MANUFACTURING TECHNOLOGIES, INC.

3565 E. Enterprise Drive, Anaheim, CA 92807

Tel: 714-630-9530 Fax: 714-630-9531 Toll Free: 888-634-9531